



Membership Minute

Vol . 011

May
2025

Approximately 50 Attend Spring Nutrient Stewardship Field Day

As part of Clinton County Farm Bureau's (CFB) 2025 Nutrient Stewardship Grant project, we were happy to welcome approximately 50 people to Sugar Creek Valley Farms on April 26th to learn more about local research and efforts happening in Clinton County. Attendees also had the opportunity to hear from Dr. Karla Gage, Associate Professor of Weed Science and Plant Biology at Southern Illinois University in Carbondale.

Dr. Gage's presentation focused on maximizing the benefits of cover crops for weed suppression. Dr. Gage commented that "Integrated Weed Management (IWM) is becoming more important as weeds like water hemp develop new herbicide resistances. Cover crops are a valuable weed management tool but also present their own management challenges."

Topics such as cover crop termination timing and planting green, the interaction of cover

Continue on page 2 - Gage



Spring Field Day

Pictured above: Cliff Schuette and Mark Litteken took attendees through 17 different cover crop varieties and mixes. Pictured to the right: Host farmer and Clinton CFB President Mark Litteken welcomes everyone to the spring Field Day.

Veterinarian Scholarships Available

The Clinton County Farm Bureau (CFB) Foundation is again offering Veterinarian Scholarships to students enrolled in their 2nd, 3rd, or 4th year at an accredited college of veterinary medicine, specializing in large animals. Scholarships can be a maximum of \$5,000, and a total of \$10,000 is dedicated to this program per year. If more than 2 students are selected as winners, funds will be divided equally (ie: 4 winners = \$2,500/each).

Students who have been accepted and completed at least 1 year of veterinary school (or will be completing their 1st year before fall of 2025) are eligible to apply for this scholarship. Applicants must be members or dependents of Clinton CFB members.

Scholarships will be given based on the following priorities:

Continue on page 3 - Scholarship

IAA Foundation Awards \$166,250 in scholarships

\$6,000 awarded to Clinton County Students

Students can count on support of scholarships for college tuition during the 2025-2026 school year, courtesy of the IAA Foundation.

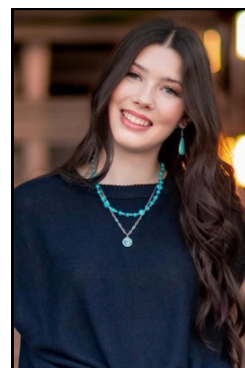
The charitable arm of the Illinois Farm Bureau, the IAA Foundation, is awarding \$166,251 to 93 students pursuing degrees in agriculture-related fields. Students are selected based on their activities and leadership, their community involvement, professional career goals and their overall commitment to success.

"Each year we are proud to support and encourage students who represent agriculture's strong and vibrant future," said Jennifer Smith, Development Manager, IAA Foundation.

Continue on page 4 - IAA



Cara Carrillon



Samantha Heinzmann



Lauren Walter



Regenerative Agriculture

Jill Vonder Haar talked a little bit about local networking opportunities on regenerative agriculture practices through the new Southern Illinois Farmers for Soil Health group.

Gage

Continued from page

crop residues and pre-emergence herbicides, and herbicide carryover concerns were presented. The Field Day also included a plot tour of fall-planted cover crop varieties and mixes, a review and discussion around necessary equipment upgrades, and forage and soil sampling were also demonstrated.

Eligible producers that attended were also entered into a drawing for 40-acres worth of cover crop seed expenses to get them started on their own

regenerative journey in the Fall of 2025. Congratulations to Paul Huelsmann from Aviston for being drawn as the winner from April's Field Day!

Be sure to join us at our final Field Day on July 26th to learn more about nutrient stewardship efforts and research in Clinton County and additional opportunities for 40 acres worth of cover crop incentives.

More information will be available by contacting the Clinton CFB office or checking out our website at www.clintoncofb.org.



Benefits of Cover Crops

Dr. Karla Gage from SIU-C provided a presentation on her research exploring the benefits of cover crops for weed suppression for the almost 50 in attendance at the April 26th Field Day.



Available area services

Emily Gaddis talked briefly about services available (roller crimper, no-till drill, etc...) through the Clinton County Soil & Water Conservation District that complement practices being discussed at the Field Day.

SAVE *the* DATE

2025 Nutrient Stewardship

field day

SAT JULY 26th

10 A.M. – 2 P.M.

RAIN OR SHINE



Funded in part through a 2025 IFB Nutrient Stewardship Grant

LOCATION:

Sugar Creek Valley Farms
12555 Poettker Road
Aviston, IL 62216

Scholarships

Continued from page 1

1. Students must be enrolled in large animal veterinary training
2. Special consideration will be given to students planning to return to Southern Illinois to practice
3. Students will be scored on

academic excellence, exemplary dedication to their chosen career path, and financial need

All applications will be reviewed by the Clinton CFB Foundation Scholarship Committee.

A link to the online application will be available on our website at <https://clintoncofb.org> until the June 30th deadline, or by

contacting the Farm Bureau office at (618) 526-7235 or clintcfb@clintoncofb.org.

To-date, the Clinton CFB Foundation has awarded \$39,500 in specific Veterinarian scholarships. As a 501(c) (3) charity, your donations to support our local efforts may be tax-deductible per IRS guidelines.

Ford Blue Advantage Vehicles NOW eligible for the Farm Bureau Recognition Program

We are excited to announce that Ford Blue Advantage Vehicles are now eligible for the Farm Bureau Recognition Program!

This exclusive \$500 Cash Reward is available on the purchase of an eligible 2020-2026MY Ford Blue Advantage Gold, EV (F-150 Lightning only), or Blue Certified vehicle, including Ford Maverick, Ranger, F-150, Super Duty, or F-150 Lightning, with under 80,000 miles.

For more details, please review the disclaimer below or visit the Farm Bureau Recognition Website at <https://www.fordrecognizesu.com>.

Available on the purchase of an eligible 2020-2026MY Ford Blue Advantage Gold, EV (F-150 Lightning only), or Blue Certified, Ford Maverick, Ranger, F-150, Super Duty or F-150 Lightning with under 80,000 miles. Not available on any other

Ford or Lincoln vehicles, or F-150 Raptor, F-150 Raptor R, Ranger Raptor or F-650 and F-750 Super Duty. Vehicle eligibility may change at any time. Available to U.S. residents only. Take delivery from an authorized Ford Dealer's stock by 1/5/2026. Limit of five purchases per household during the program offer (PGM# 32678). Offer subject to dealer participation. May not be used/combined with most other private Ford offers. See an authorized Ford Dealer, or go to <https://www.fordrecognizesu.com>, for complete details and eligibility (PGM# 32678). Due to high demand and global supply chain constraints, some models, trims, and features may not be available or may be subject to change. Check with your local Ford Dealer for current information. Offer subject to confirmation of eligibility.

Farm facts



RHUBARB

Rhubarb is one of the many plants that grow well in the Illinois climate. Read on to learn about this often-underrated vegetable that masquerades as a fruit.

- Rhubarb belongs to the buckwheat family.
- Rhubarb is considered a vegetable, but it is often treated as a fruit and used in pies, tarts, cakes and sauces.
- Only the stalks of the rhubarb plant can be safely eaten. Rhubarb leaves – cooked or raw – are extremely poisonous to people and animals, containing large amounts of oxalic acid.
- The deeper the red, the more flavorful the stalks will likely be.
- Rhubarb season in Illinois generally begins in mid-June with a second harvest in August.
- Rhubarb is a rich source of nutrients, providing 45% of the daily value of vitamin K in a 1 cup serving.
- Rhubarb is acidic, and when cooked in a reactive metal pot, it develops an unappetizing brown color on both the rhubarb and cookware.
- Rhubarb can be eaten fresh or frozen and served raw or cooked. It can also be canned.
- Freshly harvested stalks can be kept in the refrigerator unwashed and wrapped in plastic for up to three weeks.

ILLINOIS FARM BUREAU MEMBERS RECEIVE

\$500 EXCLUSIVE CASH REWARD^{1,2}

on an Eligible New Ford Truck¹ or Ford Blue AdvantageTM Certified Used Vehicle².

Visit FordRecognizesU.com/FarmBureau today for complete offer details!

IAA

Continued from page

Three students from Clinton County were awarded the Herman E. and Cecilia E. Wiedle Scholarship. This is a \$2,000 scholarship. Those scholarship recipients include:

- Cara Carrillon, current senior at Central High School in Breese. The daughter of Curt and Nicole Carrillon of Carlyle. Cara plans on attending the University of Illinois to pursue a degree in animal science.
- Samantha Heinzmann, currently a senior at Carlyle High School. The daughter of Aaron and Jenn Heinzmann of Carlyle. Samantha plans on attending Kaskaskia College to pursue a degree in agricultural education.
- Lauren Wolter, currently a sophomore at Kansas State University pursuing an Animal Science Degree. Lauren is the daughter of Bradley and Kimberly Wolter of Aviston.

Haley Bode of Waterloo, in Monroe County is the Illinois Farm Bureau Legacy of Leadership Scholarship recipient

and receives a \$7,500 scholarship for the honor. IAA Foundation Distinguished Scholars Jay Bliler of Taylorville, Jack Jungmann of Little York, and Emma Smith of Seneca, each will receive a \$5,000 award. Other \$5,000 award. Other scholarships being presented range in value from \$1,000 to \$5,000. A full listing of recipients can be found at www.iaafoundation.org.

Annually, the Illinois Farm Bureau and county Farm Bureaus combine to award more than \$1,000,000 in scholarship support.

"The scholarship program acknowledges hard-working students and offers financial support so they can pursue their dreams and land careers in agriculture," Smith said.

"Through generous farm gifts and contributions from individuals, farm families, Illinois Farm Bureau members, and others who support our industry, we continue to see diversification and growth in our program."

For more information on the IAA Foundation scholarship program, how to establish a scholarship, or to donate to a scholarship fund, visit the IAA Foundation's website at www.iaafoundation.org or call 309-557-2232.



HOW FARM BUREAU SERVED YOU IN APRIL

- 1 During Illinois Agriculture Legislative Day, Illinois Farm Bureau met with key state legislators to advocate for the Family Farm Preservation Act, which would lower the estate tax burden on family farms. Illinois Farm Bureau President Brian Duncan had the opportunity to speak with Governor J.B. Pritzker, and Duncan and IFB staff met with Illinois House leaders, including Republican Leader Tony McCombie and Speaker Emanuel "Chris" Welch.
- 2 IFB recently secured statewide black vulture depredation permits through the U.S. Fish and Wildlife Service, supporting Illinois livestock producers.
- 3 The IAA Foundation Scholarship Program awarded \$166,251 in scholarships to 93 students, supporting the next generation of agricultural leaders.
- 4 County Farm Bureaus met with elected officials to advocate for Illinois agriculture during the ongoing spring session. A few recent examples of visits include U.S. Sen. Tammy Duckworth, state Rep. Hoan Huynh, state Sen. Mike Porfrio and state Rep. Nabeela Syed.



Summer AG TOUR

JUNE 7 2025

REGISTER NOW

Contact your County Farm Bureau today!
\$50/person

RSVP BY MAY 23, 2025



A Century of Trust

In 1925, a group of Illinois farmers came together to provide fire and lightning insurance, helping to ensure their farms and crops would be protected. Over the next century, COUNTRY Financial® grew to offer a diverse range of personal and business insurance products, as well as retirement and investment services.

Over the next 100 years, our insurance will do more to protect you and your loved ones, so you can enjoy the moments that make your life full.

COUNTRY Financial® is the marketing name for the COUNTRY Financial family of affiliated companies (collectively, COUNTRY), which include COUNTRY Life Insurance Company®, COUNTRY Mutual Insurance Company®, and their respective subsidiaries, located in Bloomington, IL. 0125-042CP





Farmers Bond with their Lunch Box

Always take your lunch box along. Accept the statement as words of wisdom or a standing joke among the farm crew. On a good planting or harvest day, farmers intend to camp out in a single piece of equipment – just a guy or gal and their lunch box in the tractor, combine, semi or sprayer. But the day quickly goes awry when you dismount the tractor to help with a breakdown, jump in the service truck to grab supplies at the home farm or drive another truck to fetch a part in town. Soon, you're thirsty, hungry and two vehicles removed from your afternoon snack and Cherry Coke Zero.

The lunch box provides comfort and routine. Its caloric content caters to our personal cravings and delivers physical fuel for the body, emotional therapy for the mind and small moments of peace in a 14-hour workday. My teenage son says, "It's a good day when a lunch box is involved." The insulated cooler signals cab time and farming the land with his favorite snacks and a sweet tea.

I look forward to the lunch box rituals in the field, starting with yogurt and berries for breakfast. Lunch comes out about 11 a.m. or when field conditions allow, providing another hashmark in the

timeline of a long day. Strangely, I like traditional hot foods served cold, including homemade meatloaf or 4-H barbecue with no bun – all at the temperature of a lunchbox lined with ice packs.

While previously limited to handheld foods, today's auto-guidance permits spoons and forks. I enjoy the calm pace of soybean fields with long, back-and-forth passes. Satellites steer the tractor hands-free so I can fork my food while watching the machine's performance. In contrast, odd-shaped fields with lots of turning, stopping and starting keep my lunchbox lid largely closed.

Homemade trail mix ranks an afternoon highlight. Popcorn keeps me alert a kernel at a time. Miniature chocolate bars satisfy sweet cravings but not quite like my grandpa's treats did. All the grandkids wanted to ride with him and raid his lunch box for a piece of strawberry licorice.

Grandpa called his lunch box a dinner pail, a nod to dinner as the noon meal in farm country. For most of the world, dinner means supper time, and that's when Mom is the hero. She delivers a hot meal, homemade dessert and drinks to the field as the contents of the lunch box dwindle.

About the author: Joanie Stiers farms with her family in West Central Illinois, where they raise corn, soybeans, hay, beef cattle, backyard chickens and farmkids.

Illinois Wheat Plot Tour to be held May 20

The Illinois Wheat Association is inviting farmers and researchers to tour wheat fields and take estimate yields of the winter wheat crop during its annual Wheat Plot Tour on May 20 at the Southern Illinois University Belleville Research Center.

The tour will include field checks during the day with a late afternoon reporting session at the SIU Belleville Research Center, 2036 Charles Lane, Belleville, IL. Tour participants will have an opportunity to view wheat variety and seed treatment trials at the Belleville Center, as well as listen to scouting results and the wheat yield estimates.

Tour groups will set out at 9 a.m. on May 20 to visit various wheat fields and gather yield estimates throughout southern Illinois. Groups will stop twice per county to take estimates. The tour group information and registration is below.

Those wishing to take samples on their own and join the groups at the Belleville Research Center at 4 p.m. should contact the IWA for yield measurement instructions to ensure sampling procedures are consistent.

The event will conclude with a tour of the SIU research plots by Dr. Jessica Rutkoski, assistant professor of small grains breeding with University of Illinois, presentations from morning tour leaders discussing their findings, and a group dinner. Guest speaker Dr. Boris Camiletti with the UIUC Smart Plant Pathology lab will discuss application methods for scab control.

Participants are asked to RSVP for the group dinner by May 2. Registration is encouraged but not required.

Those interested in participating in the tour groups are asked to call your crop scouting group leader in advance to confirm involvement and meeting location the day of the tour. Participants are asked to RSVP for one of the following groups by May 16:

- AgriMAXX Wheat Seed Company, 7167 Highbanks Rd., Mascoutah, IL. Tour leader Matt Wehmeyer will take groups through St. Clair, Randolph, Washington, Marion and Perry Counties. Call 855-629-9432, or email matt@agrimaxxwheat.com to register for the tour.

THE DAILY UPDATE

The Daily Update e-newsletter fits right in with your on-the-go lifestyle. It provides the latest headlines from FarmWeek and RFD Radio Network in your in-box five days a week.

Subscribe at:
FarmWeekNow.com/newsletter

RFD RADIO NETWORK
Together, We Cover Illinois Ag Better

FarmWeekNow.com

REGISTER TODAY

ILLINOIS WHEAT ASSOCIATION

ILLINOIS WHEAT PLOT TOUR

Classroom Grant Projects

This past fall the Clinton County Farm Bureau Foundation awarded twenty-eight (28) teachers across the county grants to fund supplies, resources, or field trips to help in the instruction of agriculture.

A total of \$8,970 was awarded to help local teachers provide education about agriculture and the importance it plays in our everyday lives. Grants were awarded for agricultural field trips, books, consumable supplies, and much, much more.

We are starting to see the results of the grants, and thought we would share with our members who help make these grants possible.

To date, your Foundation has awarded over \$90,000 in classroom grants to Clinton County teachers.



Carlyle Grade School

The 3rd grade class went on a field trip to Rolling Lawns Farm and The Milkhouse in Greenville. Students were able to see the daily work of a dairy farm. They were also able to see where the milk from those cows went, how it was processed, and what products they use that were made from that milk.



KEEP IN TOUCH AND...

Follow
us on
social

FACEBOOK
FIND US ON FACEBOOK @
"Clinton County
Farm Bureau"

Our Website
www.clintoncofb.org



ARE YOU A CURRENT VET STUDENT?

Apply for Illinois Farm Bureau's IVET loan program today.

- Loan for food animal vet students
- No interest on loan while you're in school
- Up to \$40,000 loan distributed over three years

STUDENT TIMELINE:

- Applications due May 15
- Interviews are conducted in June
- Loan proceeds are dispersed in August

APPLY NOW: www.ilfb.org/iVET



Dist 12

Fourth graders completed extensive research on Dairy and gave presentations of the information they learned. Students toured the Marcoot Creamery and used their research to ask inquisitive questions about dairy procedures. Then studied recipes and the science behind using rock salt and finished the unit making their own ice cream.



Classroom Grant Projects



Carlyle Third Grade



Third-grade class had the opportunity to attend a field trip at Rolling Lawns Farm and The Milk House. At Rolling Lawns Farm, the students observed the daily operations of a dairy farm, which included an engaging demonstration of the milking process from start to finish. This hands-on experience allowed them to see firsthand how dairy products are produced. Following their time at the farm, students visited The Milk House, where students had the chance to taste different flavors of milk and enjoy their choice of ice cream. Students also learned about the processing of milk into commonly used dairy products, which reinforced their understanding of where our food comes from.



Trinity Lutheran School

Trinity Lutheran School started a once a month after school STEM club. During our April meeting students decorated cupcakes. Participants learned about the various place's food items come from and how agriculture plays a role in all of their favorite foods. The students then made and decorate cupcakes. Several parent/grandparent volunteers that came in to help the students at each station. This was a great experience for our kids!



Carlyle Kindergarten

Carlyle kindergarten students visited Marcoot Jersey Creamery in Greenville. Students learned about calves, robotic cow milking machines, and how they make cheese. They also sampled cheese and ice cream that is made from the farm's milk.



**APPLICATIONS
NOW
AVAILABLE**

Clinton County Farm Bureau Foundation Veterinary Scholarship Applications now available

For more information and a link to the application visit our website:
www.clintoncofb.org

Application deadline is
June 30, 2025



CLINTON COUNTY FARM BUREAU

SAVE THE DATE



SAT. SEPT 13, 2025

CLINTON COUNTY FAIRGROUNDS • CARLYLE, IL

1 P.M. "King of Clinton County" Farm Stock
Southern Illinois Pullers Classes & MITTP Classes

7 P.M. ITPA Tractor Pull Classes

All Day Admission

\$20 - Ages 18+ • \$10 - ages 11-17 • 10 and under FREE

Active Clinton CFB member households get \$5 ticket discounts
when purchased in advance from the Farm Bureau office

Free parking

CONCESSIONS
AVAILABLE

ITPA PULLING CLASSES:

- 9,500 lb Limited Pro Stock
- 8,500 lb Limited Pro Stock
- 2WD Truck
- 11,000 lb Pro Farm
- Light Modified
- Pro Stock
- 9,500 lb Pro Farm

"King of Clinton County" Farm Stock Southern Illinois Pullers League & MITTP

- 7,500 lb Farm Stock
- 10,500 lb Farm Stock
- 12,500 lb Farm Stock
- SIPL 5,500 lb Top Cut
- SIPL 12,500 lb 15 MPH farm stock
- 12,500+ (MITTP)
- Truck Classes

(Hot Street Gas • Super Stock Gas • Work Stock Diesel)



A fundraiser for Clinton CFB Foundation to support our scholarship programs.

