



Membership Minute

Vol. 022

April 2026

CCFB Foundation awards \$31,250 in scholarships

Funds for many of the scholarships are made available by a \$22,000 donation from the Dorothy & Wilhemine Ratermann Trust

Twenty-eight (28) college students have been selected to receive scholarships from the Clinton County Farm Bureau (CFB) Foundation for the 2026-27 school year based on their academic ability, financial need, leadership involvement and professional career goals. This year's scholarships total is \$31,250.

Funds for many of the scholarships are made available by a \$22,000 donation from the Dorothy & Wilhemine Ratermann Trust. The Ratermann's believed strongly in agriculture and the education of American youth. In addition to the gift from the Ratermann Trust, the Foundation



received over \$5,500 in contributions from approximately 1,000 members this past year. For the fourth year in a row, we also awarded the Marie Krausz Memorial Scholarship. Donated funds were designated to assist a student pursuing a degree in nursing. Additional

scholarship funds were raised from our annual "Pulling for Agriculture" tractor pull held in September.

The Clinton CFB Foundation is a charitable trust foundation that is property of Clinton County Farm Bureau members and

Continue on page 2 - *Foundation*

Southern Illinois Regenerative Bus Tour

Join the Clinton County Farm Bureau on April 18 for a Southern Illinois Regenerative Bus Tour, hosted in partnership with the Southern Illinois Farmers for Soil Health. This interactive tour will take participants to several local farms implementing innovative regenerative practices that improve soil health and nutrient stewardship.

Participants will visit our local Cover Crop and Forage Plot and hear directly from farmers about their experiences with regenerative systems. Along the way, we'll explore practical discussions on cover crop timing, termination strategies, and in-field management.

The tour will also include hands-on demonstrations such as soil penetrometer readings, water infiltration testing, and Brix testing, giving attendees the opportunity to see how these tools can help evaluate soil structure, plant health, and overall system performance in the field.

This tour is a great opportunity for farmers, landowners, and conservation-minded individuals to learn from peers, see real-world practices in action, and gain insights into building healthier soils.

Call the office at (618) 526-7235 to register.

America's 250th Anniversary and National Ag Month Winners announced

In honor of America's 250th anniversary and National Agriculture Month, the Clinton County Farm Bureau proudly celebrated the rich history of our nation and the vital role agriculture continues to play in sustaining our communities by giving back to its members through a special commemorative giveaway.

For 250 years, agriculture has been at the heart of America's story. From the earliest days of our country to today's modern farms, farmers have provided the food we eat, the fuel that powers our equipment and vehicles, and the fiber used in clothing and everyday products. Agriculture touches every part of daily life, and this milestone celebration was a meaningful way to recognize that lasting impact.

Continue on page 10 - *Winners*

Spring Porch Bunny Workshop



Thirty-four participants joined us for the final workshop in our Adult Ag in the Classroom Series, creating their own spring porch bunny decorations so their porches will be ready to welcome spring! Events like this help support Ag in the Classroom and its mission to connect students with the importance of agriculture in their everyday lives. More photos from this event can be found on Page 8. Check out what we have planned for you in our next series of workshops on Page 7—we think you're going to enjoy what we have planned!

Foundation

Continued from page 1

administered by a local Board of Directors. The Clinton CFB Foundation was formed to provide scholarships and other resources for the promotion and education of agriculture. Anyone can contribute to the Foundation and all contributions are tax-deductible. To-date, the Clinton CFB Foundation has awarded 593 scholarships to sons and daughters of Clinton CFB members with a total of \$557,550.

The Clinton CFB Foundation salutes each of this year's winners and wishes them continued success in their future

pursuits.

Blake Twenhafel (\$3,500)— son of Michael and Angie Twenhafel of New Baden. Blake is a 2023 graduate of Wesclin High School and is currently attending The University of Illinois pursuing a degree in Crop Science.

Kierstan Lampe (\$3,000)— son of Craig and Stacey Lampe of Aviston. Kierstan is a 2023 graduate of Central High School and is currently attending Iowa State University pursuing a degree in Animal Science.

Drew Lueking (\$2,500)— son of Douglas and Sheila Lueking of Centralia. Drew is currently a senior at Christ Our Rock Lutheran High School with plans to attend Lake Land College and later transfer to a four year

university to obtain a degree in Animal Science/Ag Business.

Cara Carrillon (\$2,500)— daughter of Curt and Nicole Carrillon of Carlyle. Cara is a 2025 graduate of Central High School and is currently attending the University of Illinois Urbana-Champaign to obtain a degree in Animal Science.

Kalie Wellen (\$1,750)— daughter of Cory and Brianne Wellen of Albers. Kalie is 2024 graduate of Central High School and is currently attending Murray State University majoring in Animal Science with food animal emphasis.

Evan Beal (\$1,500)— son of Jonathan and Kerri Beal of Centralia. Evan is currently a senior at Christ Our Rock Lutheran High School with plans to obtain a degree in Agribusiness with a focus in Beef Production.

Grace Henrichs (\$1,500)— daughter of Bryan and Emily Henrichs of Breese. Grace is currently a senior at Central High School with plans to pursue a degree in Ag Business and History on a pre-law track.

Caiden Litteken (\$1,500)— son of Mark and Jenny Litteken of Aviston. Caiden is currently a senior at Central High School with plans to attend Lake Land College with plans to later transfer to a university to obtain a degree in Animal Science with an emphasis in Animal Nutrition.

Kara Schomaker (\$1,250)— daughter of Nick and Anita Schomaker of Germantown. Kara is currently a senior at Central High School, planning to pursue a biology degree with a pre-medical track at the University of Mississippi.

Clayton Jansen (\$1,000)— son of Ryan and Kelly Jansen of Albers. Clayton is currently a senior at Central High School with plans to attend Southern Illinois University in Carbondale to earn a degree in Aviation Management/Professional Flight.

Alexis Kampwerth (\$1,000)— Marie Krausz Memorial Scholarship) — daughter of Ryan Kampwerth and Brandi Starke of Aviston. Alexis is a 2023 graduate of Mater Dei High School currently pursuing a degree in nursing at Southern Illinois University in Edwardsville.

Jackson Kampwerth (\$1,000)— son of Matthew and Tanya Kampwerth of Carlyle. Jackson is currently a senior at Central High School with plans on earning a degree in Agribusiness Economics.

Reid Koch (\$1,000)— daughter of Dale and Monica Koch of Germantown. Reid is a 2025 graduate of Mater Dei High School and is currently attending Murray State University pursuing a degree in Agriculture Science with a minor in equine science.

Abigail Voss (\$1,000)— daughter of Jared and Lisa Voss of Carlyle. Abigail is a 2025 graduate of Central High School and is currently attending Southern Illinois University, Edwardsville, pursuing a degree in Elementary Education.

Lilly Henrichs (\$750)— daughter of Michael and Rebecca Henrichs of Breese. Lilly is currently a senior at Central High School, planning on pursuing a degree in nursing at Murray State University.

Adelyn Schroeder (\$750)— daughter of Jacob and Pamela Schroeder of Bartelso. Adelyn is currently a senior at Central High School with plans to pursue a degree in Mechanical Engineering at Southern Illinois University in Edwardsville.

Abigail Steinkamp (\$750)— daughter of Eric and Jennifer Steinkamp of Bartelso. Abigail is currently a senior at Carlyle High School with plans to attend the Southern Illinois University in Edwardsville to obtain a degree in Biological Sciences.

Rebecca Albers (\$500)— daughter of Bryan and Ann Albers of Trenton. Rebecca is currently a senior at Wesclin High School with plans to attend Kaskaskia College before transferring to a four-year college to earn a Biology Degree.

Ethan Brinkmann (\$500)— son of Jason and Elisha Brinkmann of Carlyle. Ethan is currently a senior at Carlyle High School and plans to attend Southern Illinois University, Carbondale, to major in Pre-Law to become an Environmental Lawyer.

Madeline Fuhler (\$500)— daughter of Robert and Debra Fuhler of Pocahontas. Madeline is currently a senior at Central High School with plans to attend



He's a farmer. A leader. A family man.

But who is Philip Nelson, really?

In this episode of Taking Stalk, host Rita Frazer goes beyond the title to learn more about Illinois Farm Bureau's 17th president — discussing everything from Nelson's deep roots in agriculture to how he likes his steak cooked.

Don't miss a chance to learn more about what drives Nelson in the day-to-day — and why he returned to lead Illinois Farm Bureau 12 years after serving in the role for a decade.

Episode 38

Philip Nelson on leadership, legacy and Illinois ag

Scan to listen



Listen: FarmWeekNow.com/podcasts
(or wherever you listen to podcast)

Continue on page 4 - **Foundation**



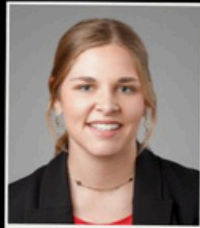
To-date, the Foundation has awarded 593 scholarships totaling \$557,550 to different sons and daughters of Clinton County Farm Bureau members.

CONGRATULATIONS TO OUR WINNERS!

\$31,250 awarded in scholarships



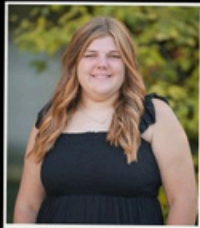
Blake Twenhafel
\$3,500 Recipient



Kierstan Lampe
\$3,000 Recipient



Drew Lueking
\$2,500 Recipient



Cara Carrillon
\$2,500 Recipient



Kalie Wellen
\$1,750 Recipient



Evan Beal
\$1,500 Recipient



Grace Henrichs
\$1,500 Recipient



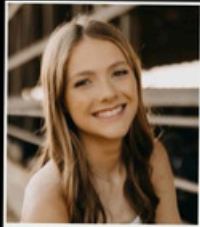
Caiden Litteken
\$1,500 Recipient



Kara Schomaker
\$1,250 Recipient



Clayton Jansen
\$1,000 Recipient



Alexis Kampwerth
\$1,000 Recipient



Jackson Kampwerth
\$1,000 Recipient



Reid Koch
\$1,000 Recipient



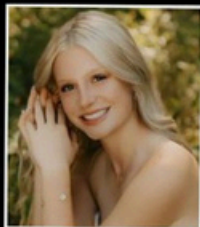
Abigail Voss
\$1,000 Recipient



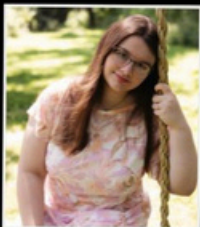
Lilly Henrichs
\$750 Recipient



Adelyn Schroeder
\$750 Recipient



Abigail Steinkamp
\$750 Recipient



Rebecca Albers
\$500 Recipient



Ethan Brinkmann
\$500 Recipient



Madeline Fuhler
\$500 Recipient



Clara Gerdes
\$500 Recipient



Trent Korte
\$500 Recipient



Carson Moore
\$500 Recipient



Christopher Richter
\$500 Recipient



Karli Thole
\$500 Recipient



April Wilken
\$500 Recipient



Emily Cirrincione
\$250 Recipient



Brady Moore
\$250 Recipient

Marie Krausz Memorial Nursing Scholarship awarded to Alexis Kampwerth

Foundation

Continued from page 1

Kaskaskia College and later transferring to a four-year university to obtain a degree in Animal Science.

Clara Gerdes (\$500) – daughter of Alan and Renee Gerdes of Bartelso. Clara is currently a senior at Central High School with plans on attending the University of Missouri to obtain a degree in Animal Sciences with hopes to attend veterinary school in the future.

Trent Korte (\$500) – son of Keith and Erin Korte of Damiansville. Trent is a 2025 graduate of Mater Dei High School and is currently attending Kaskaskia College with plans to transfer to a four-year university to pursue a degree in finance.

Carson Moore (\$500) – son of Tim and Renee Moore of Bartelso. Carson is a 2025 graduate of Central High School currently attending Southwestern Illinois College pilot training program.

Christopher Richter (\$500) – son of Allen and Barbara Richter of Aviston. Christopher is a 2024 graduate of Central High School

and is currently attending Southern Illinois University Edwardsville pursuing a degree in Computer Science.

Karli Thole (\$500) – daughter of Randy and Joanie Thole of Germantown. Karli is currently a senior at Central High School with plans to attend McKendree University to obtain her master's in accounting with a minor in business or finance.

April Wilken (\$500) – the daughter of Adam and Rose Wilken of Germantown. April is currently a senior at Central High School with plans to attend the University of Missouri, Columbia, to obtain a degree in Strategic Communications/Public Relations focusing on Agribusiness.

Emily Cirrincione (\$250) – daughter of Joseph and Laura Cirrincione of St. Rose. Emily is currently a senior at Central High School with plans to attend Kaskaskia College to study to be a paramedic/EMT.

Brady Moore (\$250) – son of Tim and Renee Moore of Bartelso. Brady is a 2022 graduate of Central High School currently attending McKendree University majoring in Physical Education and Health Education.



Soybean: Small bean with a big resume

If I were a crop, I might be a soybean. I'm short, low drama and work best behind the scenes. My mood can shift from tolerant and forgiving (planting season) to an annoying attention to detail (harvest). But chocolate holds it all together. (Soy is the key; I'll explain).

All of that is really by comparison to corn, the primary crop alternative in Illinois. We live in the Corn Belt. Corn gains name fame for its visual dominance in acres. We find fascination in corn mazes, and the most common consumer-facing farm policy conversations – like ethanol – involve corn.

Unbeknownst to most citizens, Illinois grows more than 20 million tons of soybeans annually and claims the reigning title of No. 1 soybean state in the nation. The achievement reached the heart of Springfield, where legislators voted the soybean as the Illinois state bean in 2025.

Soybeans make a great team with corn as a rotational crop companion and literally bring the muscle with their protein punch. Our FFA chapter packed 4,000 non-perishable meals for local food pantries using soy protein, a budget-friendly, high-protein staple. Soy protein is a common ingredient in meat, both plant-based alternatives and the real thing. Soybean meal, the byproduct after removing the seed's oil, is the nation's top high-protein feed that brings chicken, pork,

eggs and dairy to the table.

The average American consumes nearly half a cup of soybeans in some form every day, which could include cooking oil, margarine, soy milk and protein shakes. Soy lecithin keeps chocolate and cocoa butter from separating. Hooray for soy holding together my bite-sized sweet fix after lunch, which likely was a salad that wouldn't exist without dressing, a soy-dominant lifeline for the fresh greens.

Our farm fuels its tractors and trucks with soy-based biodiesel. Soy oil is a named ingredient in plastics for John Deere and the foam in the seats of Ford vehicles. This month, I will see the bean more than my family as I plant some 300 million of those pea-sized seeds across our farm.

Thankfully, soybeans tolerate a wider range of "good-enough" conditions during planting season. Corn prefers perfection. The tides turn come harvest, when the bean gets moody: moisture content rapidly shifts from too wet to too dry, and the mature, standing crop's harvestability is notoriously sensitive to weather.

Beyond that, soybeans check the boxes for Illinois: rotational cropping systems, soil types, climate and access to exports in a state literally shaped by rivers. As the top U.S. agricultural export crop, soybeans bring billions of dollars to America's economy.

Those are some cool beans.

About the author: Joanie Stiers farms with her family in West Central Illinois, where they raise corn, soybeans, hay, beef cattle, backyard chickens and farm kids.



A Century of Trust

In 1925, a group of Illinois farmers came together to provide fire and lightning insurance, helping to ensure their farms and crops would be protected. Over the next century, COUNTRY Financial® grew to offer a diverse range of personal and business insurance products, as well as retirement and investment services.

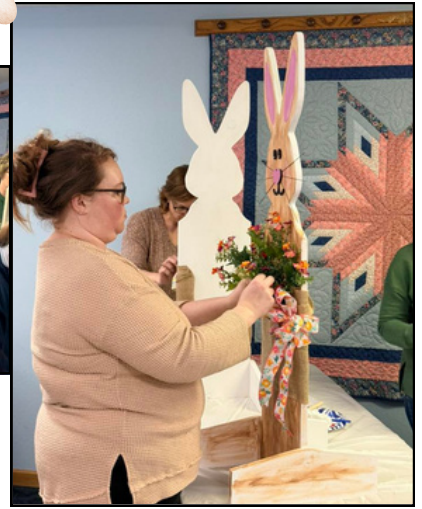
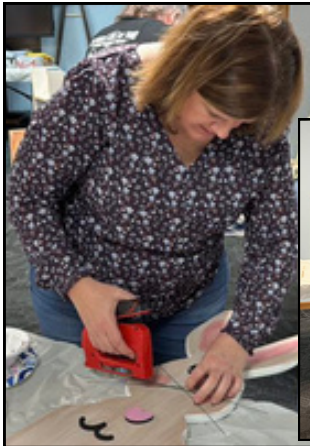
Over the next 100 years, our insurance will do more to protect you and your loved ones, so you can enjoy the moments that make your life full.

COUNTRY Financial® is the marketing name for the COUNTRY Financial family of affiliated companies (collectively, COUNTRY), which include COUNTRY Life Insurance Company®, COUNTRY Mutual Insurance Company®, and their respective subsidiaries, located in Bloomington, IL. 0125-042CP





PORCH BUNNY WORKSHOP



**34 PARTICIPANTS
5 TAKE HOME KITS**



Adult Ag in the Classroom Workshop Series will return with seasonal creative fun

We have been busy planning and creating our next lineup and are excited to announce the return of our Adult Ag in the Classroom Workshop Series!

This fun and creative series features a variety of seasonal, hands-on workshops designed to bring adults together while supporting our Agriculture in the Classroom program. Participants will enjoy the opportunity to create unique projects, spend time with friends, and support educational efforts that help connect students to agriculture.

This year's workshop series includes:

Christmas in July

Nutcracker Paint Party

Join us for a festive nutcracker decorating night with a fun summer twist on the holiday season! Participants will paint their own decorative nutcracker-themed project while enjoying an evening filled with creativity, laughter, charcuterie treats, and holiday magic. Grab your girlfriends and come celebrate Christmas in July with us!

Pumpkin Floral Arrangement Workshop

Create a beautiful seasonal centerpiece inside a real pumpkin using fresh blooms, textural accents, and curated details. Participants will learn professional styling techniques while designing a one-of-a-kind arrangement perfect for fall décor or a Thanksgiving table centerpiece.

Holiday Porch Pot Workshop

Design a stunning seasonal arrangement to welcome guests all winter long. With guidance from our expert instructor, participants will create their own custom porch pot using fresh live greens, vibrant winter berries, elegant curly willow branches, and a variety of festive accents. Whether your style is classic and natural or bold and whimsical, you'll leave with a



beautiful decoration perfect for your porch, patio, or front steps.

Crushed Glass Suncatchers Workshop

Let the light shine through your creativity! In this hands-on workshop, participants will design a dazzling suncatcher using crushed glass in vibrant colors and resin to create a beautiful "fused glass" look. We'll guide you step-by-step as you arrange your design and set it in place, creating a one-of-a-kind piece that glitters beautifully in the sunlight. No experience is needed—just bring your imagination! Projects are approximately 11 inches in height, and the finished piece makes a colorful and eye-catching décor item for any season.

The Adult Ag in the Classroom Workshop Series is designed to provide meaningful opportunities for adults to engage with Farm Bureau programming in a new and enjoyable way. Proceeds from the workshops help support Agriculture in the Classroom, which provides students with valuable lessons about the importance of agriculture in everyday life.

Now entering our third year of these workshops, we have truly loved watching participants come together, learn new skills, and enjoy creative experiences that support a great cause. It has been so rewarding to see this program grow, and we look forward to continuing to offer fun, hands-on activities that keep the series going strong for years to come. If you have suggestions for future workshop projects, please reach out and let us know — we are always looking for fun and creative ways to keep the program fresh and engaging.

ADULT AGRICULTURE IN THE CLASSROOM
CLINTON COUNTY

Adult Ag in the Classroom

WORKSHOP SERIES

We are excited to bring back our winter series of "Adult Ag in the Classroom"!

ALL PROCEEDS BENEFIT THE CLINTON COUNTY AG IN THE CLASSROOM PROGRAM!

Follow us on Facebook for more information and registration links!

Christmas In July
Nutcracker Paint Party
July 1



Registration open

Pumpkin Floral Workshop
November 23



Registration opens Oct. 1

Holiday Porch Pots
December 3



Registration opens Nov 1

Crushed Glass Suncatcher
February 5



Registration opens Jan. 1

Over 150 Attend “Soil Summit” on March 5th

The Clinton County Farm Bureau’s 2026 Soil Summit drew more than 150 attendees to the St. Rose Development Club on March 5th, highlighting strong local interest in soil health and regenerative agriculture. Hosted as part of CFB’s 2026 Nutrient Stewardship Grant project, the event brought together farmers, landowners, and community members for an evening of learning, discussion, and practical insight. Guests enjoyed a catered meal before an engaging presentation from returning speaker Ray Archuleta.

An internationally recognized agronomist and leader in the soil health movement, Archuleta challenged attendees to rethink traditional management practices by focusing on soil biology, reducing disturbance, maintaining cover, increasing diversity, and keeping living roots in the ground. A highlight of the evening was his hands-on soil demonstration comparing forest, pasture, no-till, and tilled soils—clearly illustrating how healthier soils hold together better and improve water infiltration, reinforcing the importance of building long-term soil resilience.

The Summit also encouraged action, offering eligible producers a chance to participate in a cover crop seed subsidy program for Fall 2026. With



Ray Archuleta addresses over 150 in attendance at the Clinton CFB’s “Soil Summit” in St. Rose on March 5th.

strong attendance and enthusiastic engagement, the event underscored the value of continued investment in conservation-focused programming.

Mark your calendars to join the Clinton County Farm Bureau for additional Field Day opportunities, including a Regenerative Agriculture Bus Tour on April 18th and a Summer Field Day on August 8th. More information on both will be available on the Clinton CFB’s website at www.clintoncofb.org.



CCFB Director, Cliff Schuette, welcomes guest to the 2026 Soil Summit featuring guest speaker Ray Archuleta.

2026 NUTRIENT STEWARDSHIP FIELD DAY

Scan to register online today!

APRIL
18

10:00 A.M. – 3:00 P.M.
RAIN OR SHINE | LUNCH PROVIDED

CLINTON COUNTY FARM BUREAU OFFICE
1165 N 4TH STREET | BREESE, IL 62230

RSVP BY: Tuesday, April 14

CALL (618) 526-7235 TO THE CLINTON COUNTY FARM BUREAU

Join the Clinton County Farm Bureau for a Southern Illinois Regenerative Bus Tour, hosted in partnership with the Southern Illinois Farmers for Soil Health. This interactive tour will visit local farms implementing innovative regenerative practices that improve soil health and nutrient stewardship.

Stops will include our local Cover Crop and Forage Plot, along with conversations with farmers about cover crop timing, termination, and management strategies. Participants will also see in-field demonstrations including soil penetrometer readings, water infiltration testing, and Brix testing to evaluate soil health and plant performance.

ADDITIONAL SPONSORS:



Joint Meeting

The Clinton County Farm Bureau Board of Directors recently met with members of the County Board and other county officials for their annual joint dinner meeting, an event designed to strengthen relationships and foster open dialogue on the issues impacting agriculture and local government. Clinton County continues to rank among the top agricultural counties in Illinois in terms of gross receipts, and Farm Bureau leadership values the opportunity to share updates on programs and priorities that support local farm families and rural communities. The evening also served as a chance to recognize the dedication of county officials, who regularly face complex decisions while working to promote growth and maintain fiscal responsibility. This ongoing exchange reflects a shared commitment to collaboration, mutual understanding, and continued partnership in serving the residents of Clinton County.

JOIN US FOR A Christmas in July NUTCRACKER Paint Party
Wednesday, July 1
 6-9 P.M.

REGISTER TODAY

Enjoy a relaxing evening with friends while supporting agricultural education in our local classrooms. Every brushstroke helps bring hands-on learning experiences to students across Clinton County.

Tickets include: charcuterie treats holiday nutcracker all paint supplies Bring your favorite drinks

\$40 for members
\$50 non-members

Soil Testing Kits available

The Clinton County Farm Bureau, in partnership with the Clinton County Illinois Extension Office, is offering soil testing kits this spring with support from the 2026 Nutrient Stewardship Grant Program. This program helps homeowners and gardeners better understand their soil while promoting responsible nutrient management. You may have questions about

your soil, so let us help you take the guesswork out of soil improvement with soil testing. With soil testing, you can find out what your soil needs and get fertilizer recommendations based on your soil's specific needs. The soil test includes soil pH, Potassium, Phosphorous, Calcium, Magnesium, Organic Matter, and Cation Exchange Capacity.

Farm Bureau Soil Test Kit Pricing

- Soil Test Kit – 1 sample: \$25 member/\$30 non-member
- 2-sample kit: \$40 member/\$50 non-member
- 3-sample kit: \$55 member/\$70 non-member

*Pricing subject to change
 Additional recommendations based on your soil sample results will be provided by the soil testing lab. However, we know that sometimes it's nice to talk with an expert about your soil results and how to improve your soil's potential. Illinois Extension Educator Chris Lueking and local Master Gardeners are available to answer your specific questions about soil tests, landscaping, tree care, lawn care, and gardening.

Soil kits are available at the Clinton County Farm Bureau Office, 1165 N 4th St., Breese.

More information is available on our website: www.clintcofb.org. Or you can call the office at (618) 526-7235 if you have any questions.

Soil Testing Program

Soil testing takes the guesswork out of soil improvement, growing plants, and fertilizer recommendations.

- What's wrong with this lawn?
- Why won't my garden grow?
- The flowers need something...
- Why aren't these shrubs performing?
- These crops aren't yielding like they should?



Pricing:
 1 Sample Soil Kit: \$25 for members/\$30 non-members
 2 Sample Soil Kit: \$40 for members/\$50 non-members

Stop by our office in Breese for more information and to obtain your kit.

(618) 526-7235 www.clintoncofb.org



Young Leaders host FFA Quiz Bowl



First Place team - Carlyle #2



Second Place team - Wesclin #1



Third Place team - Central #1

On March 2th three (3) Clinton County FFA chapters participated in a "FFA Quiz Bowl" sponsored by the Clinton County Farm Bureau's Young Leader Committee. Central High School in Breese hosted the event, which also included teams from Carlyle, and Wesclin High School.

Students were asked multiple choice questions with four possible answers where they could buzz in with the correct answer to earn points for their team. Questions asked included subjects such as Agriculture Safety, Agriculture Mechanics, Animal Science, Crop Production,

FFA, Natural Resources, and Agriculture Issues/Current Events.

In-between competitions, teams also enjoyed pizza and drinks, and had an opportunity to become more familiar with the Farm Bureau and the Young Leader Committee members. Prizes were awarded to students from the top three teams, but every participant and Advisor received t-shirts and other Farm Bureau freebies for participating.

With over 20 students/6 teams competing, each team battled through two preliminary rounds, showing off their teamwork, quick thinking, and ag smarts.

After some close matchups, the top three teams advanced to the finals for an exciting finish! This year's winning teams were:
1st Place – Carlyle Team #2
2nd Place – Wesclin Team #1
3rd Place – Central Team #1.



Quiz Bowl Competition

Apply today for the 2026 Community Impact Grant



Community IMPACT GRANT

Applications Available

The Clinton County Farm Bureau's "Community Impact Grant" program seeks to identify projects that will improve our communities and create partnerships with groups and individuals to make them happen.






Examples of eligible organizations in Clinton County could include schools, civic organizations, churches, 4-H clubs, FFA chapters and more. Project ideas could include efforts like upgrades to community buildings, spaces, and playgrounds; needed equipment for 4-H clubs, FFA Chapters, or other school clubs/organizations; and other community-based projects that could use additional funding.

Online applications available on our website: www.clintoncofb.org



WAYS.....

FARM BUREAU WORKS FOR YOU

-  More than four million dollars saved through member benefit programs for farm, family and home.
- Advocating for legislation on state and federal levels that works for farmers. 
-  Educating youth about the vital role agriculture plays in Illinois.
- Keeping you informed through RFD Radio Network, FarmWeek, websites, smart phone apps, and more! 
-  Providing a place for farmers and their families to collaborate, share ideas, and learn together.



CONNECTING agriculture and education

in the classroom

Clinton County Farm Bureau

2026 Summer Ag Tours

JUNE 9 & 10

AG TOURS PLANNED

- Crooked Creek Winery Tour
- Centralia House Restaurant Presentation
- Hippolyt/Equine/Horse Visit and information
- Tour & Presentation with Plant Land
- Bee Presentation with Al Guttersohn of Breese
- Main Street Pastures
- Commodity presentations from beef, corn, dairy & Pork

Illinois Ag in the Classroom staff will provide hands-on lessons along with learning and grant opportunities

\$65 For 16 PDCH's
Must be in attendance both days
lunch provided one day
travel not included
Only accepting 12 teachers

TO RESERVE YOUR SPOT
PLEASE COMPLETE THE
ONLINE REGISTRATION FORM
BY SCANNING THE QR CODE

Scan for online registration

CLINTON COUNTY FARM BUREAU
Farm, Family, Food™

Illinois AGRICULTURE
in the Classroom

Winners

Continued from page 1

As part of the celebration, the Clinton County Farm Bureau awarded 15 members with prize packages valued at \$50 each, representing agriculture's everyday influence through three categories:

- Food
 - Pat Voss
 - Bradley Varel
 - Michele Diekemper
 - James Cryder
 - Stacey Gerdes
- Fuel
 - Jenna Hemker
 - Matt Krausz
 - Dean Haselhorst
 - Rose Wilken
 - Beth Monken
- Fiber
 - Connie Kampwerth
 - Sue Jansen
 - Annette Tebbe
 - Taylor Zurliene
 - Doris Albers

In addition, one grand prize winner, Louis Timmermann, will receive a \$250 farm fuel credit from their local fuel supplier.

These giveaways honored both America's history and the generations of farm families who have helped shape our communities by continuing to provide the essentials that feed, fuel, and clothe us. National Ag Month served as the perfect opportunity to recognize that legacy and celebrate the importance of agriculture today and into the future.

Winners were selected from eligible Clinton County Farm Bureau members in good standing who completed the online registration form, and were officially confirmed following the April Board Meeting.

The Clinton County Farm Bureau thanks all members who participated and joins the community in celebrating 250 years of American agriculture and the people who keep it strong every day.

All winners are encouraged to check their email account used when registering for instructions on how to claim their prizes. Congratulations again to each of our recipients!

KEEP IN TOUCH AND...

Follow us on social

FACEBOOK
FIND US ON FACEBOOK @
"Clinton County Farm Bureau"

Our Website
www.clintoncofb.org

DESKTOP

1. Go to <https://ilfb.benefitHub.com>.
2. Sign in with your existing username and password or register as a new user by selecting "Don't have an account? Sign up. You will need your membership number to complete sign up."
3. Find the best deals and start saving!

MOBILE APP

ANDROID

1. Go to Google Play and search for **Illinois Farm Bureau Member Benefits** and install the app.
2. Once installed, you will see a log in button. Click it and sign in with your existing Benefithub account or register to create one. You will need your membership number which can be found on the front of your membership card.
3. Once logged in, you will see a welcome page, spotlight offers and a search bar to explore all the savings offered on the platform. Click on the menu button (gear icon at the bottom of the screen) to see all categories.

iPHONE

1. Go to the App Store and search for **Illinois Farm Bureau Member Benefits** and install the app.
2. Once installed, you will see a log in button. Click it and sign in with your existing Benefithub account or register to create one. You will need your membership number which can be found on the front of your membership card.
3. Once logged in, you will see a welcome page, spotlight offers and a search bar to explore all the savings offered on the platform. Click on the menu button (gear icon at the bottom of the screen) to see all categories.

NATIONAL AG MONTH WINNERS

*Agriculture is more than farming...
it's the food on your plate, the fuel in your car, and the clothes on your back.*

\$50 WORTH OF



FOOD

**PAT VOSS
BRADLEY VAREL
MICHELE DIEKEMPER
JAMES CRYDER
STACEY GERDES**

FUEL



**JENNA HEMKER
MATT KRAUSZ
DEAN HASELHORST
ROSE WILKEN
BETH MONKEN**



FIBER

**CONNIE KAMPWERTH
SUE JANSEN
ANNETTE TEBBE
TAYLOR ZURLIENE
DORIS ALBERS**

GRAND PRIZE

\$250

**FARM FUEL
CREDIT**

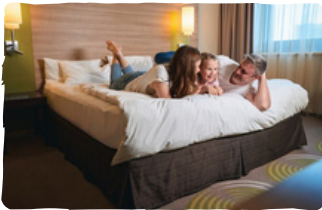
FROM YOUR LOCAL SUPPLIER



**LOUIS
TIMMERMANN**



MEMBERS SAVE EVERY DAY



SAVE ON TRIPS
RELAX WITH YOUR SAVINGS
AT **HOTELS**



SAVE ON THE ROAD
EXPLORE YOUR SAVINGS
ON **RENTAL CARS**



SAVE IN THE GARAGE
CRUISE INTO SAVINGS
ON **FORD VEHICLES**



DISCOVER YOUR BENEFITS **TODAY!**

www.myifb.org

NEED ASSISTANCE? CONTACT STEPHANIE AT SKNITTEL@ILFB.ORG

