

Strong Turnout for Southern Illinois Regenerative Bus Tour

The Clinton County Farm Bureau's Southern Illinois Regenerative Bus Tour, held on April 18th in partnership with the Southern Illinois Farmers for Soil Health, brought together approximately 30 farmers, landowners, and conservation partners for a full day of hands-on learning and in-field demonstrations focused on improving soil health and nutrient stewardship.

Participants traveled to several local farms utilizing innovative regenerative practices, gaining first-hand insight into how these systems are being implemented across southern Illinois.

Continue on page 2 - **Tour**



Live Dig

A "live" pit dig provided a glimpse of what's happening under the surface during a stop at one of Paul Meyer's cover crop fields.

Clinton CFB Foundation Offering Large Animal Veterinarian Scholarships

The Clinton County Farm Bureau (CFB) Foundation is now accepting applications for its Large Animal Veterinarian Scholarship Program, offering up to a total of \$10,000 in scholarship funding annually to support students pursuing a career as a large animal Veterinarian. To-date, \$42,000 in Veterinarian Scholarships have been awarded since 2014.

Individual scholarships of up to \$5,000 each will be awarded to eligible students currently enrolled in their 2nd, 3rd, or 4th year at an accredited college of veterinary medicine.

Students who have completed at least one year of veterinary school—or will complete their first year prior to Fall 2026—are eligible to apply. Applicants must be Clinton County Farm Bureau members (or

Continue on page 3 - **IAA**

Continue on page 2 - **Vet**

IAA Foundation awards \$303,751 in Scholarships to students pursuing ag degrees

Students across Illinois can count on scholarship support for the 2026–2027 academic year, thanks to the IAA Foundation, the charitable arm of the Illinois Farm Bureau.

This year, the IAA Foundation is awarding \$303,751 in scholarships to 127 students pursuing degrees in agriculture-related fields. Recipients are

selected based on leadership, community involvement, career goals, academic achievements, and commitment to success.

Five students from Clinton County were selected as scholarship recipients:
Herman E. and Cecilia E. Wiedle Scholarship—\$2,000

- Cara Carrillon, daughter of Curt and Nicole Carrillon of

Carlyle. Cara will be a sophomore at University of Illinois at Urbana-Champaign majoring in animal science.

- Cameryn Pollmann, daughter of Josh and Jamie Pollmann of Bartelso. Cameryn will be a freshman

Young Leaders award five safety grant to area fire departments

Members of the Clinton County Farm Bureau (CFB) Young Leader Committee had another good response for their 2026 Equipment Grant program, receiving five (5) applications that requested over \$15,000 in funding. In cooperation with a \$800 "Farm Safety Grant" from the Illinois Farm Bureau and COUNTRY Financial, all seven were awarded grants ranging in

value from \$500 to \$800, for a total of \$2,950 in funding for 2026.

The five (5) departments awarded funding for 2026 were:

- Clin-Clair Fire Protection Dist. - \$500
- Hoffman Fire Protection Dist. - \$500
- Huey-Ferrin-Boulder Fire Dept. - \$800
- St. Rose Fire Dept. - \$650

- Sugar Creek Fire Protection Dist. - \$500

With the donated funds, each department will purchase a variety of agriculture related equipment to assist them and their teams at calls ranging from multi gas detector, thermal imaging cameras, wenches, combustible gas detectors and backpack blowers. With Clinton County being such an

agricultural county, emergency personnel find these grant-purchased items to be beneficial assets to their departments. Congratulations to all recipients of the Clinton CFB Young Leader's Equipment Grant program! We appreciate the opportunity to work with great departments and individuals on equipment that could

Continue on page 3 - **Safety**

Tour

Continued from page 1

Attendees heard directly from local farmers about their experiences with cover crop adoption, management, and the long-term benefits they are seeing in their operations.

Throughout the tour, discussions centered on practical management decisions such as cover crop timing, termination strategies, and in-season adjustments, providing valuable, real-world perspective for those looking to adopt or refine these practices.

One of the highlights of the day was a "live" soil pit dig, which gave attendees a unique below-ground look at soil structure, root development, and biological activity. This hands-on demonstration helped illustrate the impact that regenerative practices and cover crops can have on soil health over time.

Additional in-field demonstrations included soil penetrometer readings, water infiltration testing, and Brix testing, allowing participants to evaluate soil compaction, water movement, and plant health in real time. These demonstrations reinforced how measurable data can support better management decisions in the field.

The tour also featured an experimental strawberry plot planted into cover crops,



Experimental Plot

Brooke Mollet briefly discussed her experimental strawberry plot that was planted into cover crops with this custom-built planter and drip irrigation setup.

showcasing how regenerative practices can extend beyond traditional row crops and into specialty crop production. This stop sparked conversation about new opportunities for diversification and soil-friendly production systems.

To further encourage adoption of conservation practices, participants had the opportunity to take part in a cover crop subsidy drawing, highlighting available resources and support for implementing these practices on their own farms.

Overall, the tour provided a valuable opportunity for



Research Plot update

Mark Litteken talks attendees through the Farm Bureau's cover crop research plot on his farm near Aviston.

attendees to learn from one another, ask questions, and see regenerative agriculture in action. Events like this continue

to strengthen local efforts to promote sustainable farming practices and support long-term soil health across the region.

Vet

Continued from page 1

dependents of members) and must be specializing in large animal Veterinarian training.

Special consideration will be given to applicants planning to return to Southern Illinois to practice. Scholarship recipients will be selected based on academic excellence, demonstrated commitment to

their career path, and financial need.

Applications are available online at <https://clintoncofb.org> and must be submitted by June 30th. All applications will be reviewed by the Clinton County Farm Bureau Foundation Scholarship Committee.

For more information, contact the Clinton County Farm Bureau office at (618) 526-7235 or clintcofb@clintoncofb.org.

SOIL TESTING PROGRAM

Soil testing takes the guesswork out of soil improvement, growing plants, and fertilizer recommendations.

- ✔ What's wrong with this lawn?
- ✔ Why won't my garden grow?
- ✔ The flowers need something...
- ✔ Why aren't these shrubs performing?
- ✔ These crops aren't yielding like they should?

PRICING

- 1 Sample Soil Kit: \$25 for members / \$30 non-members
- 2 Sample Soil Kit: \$40 for members / \$50 non-members

Stop by our office in Breese for more information and to obtain your kit.

(618) 526-7235 www.clintoncofb.org




KEEP IN TOUCH AND...

Follow us on social

FACEBOOK
FIND US ON FACEBOOK @
"Clinton County Farm Bureau"

Our Website
www.clintoncofb.org



Cara Carrillon

Herman E. and Cecilia E. Wiedle
Scholarship – \$2,000



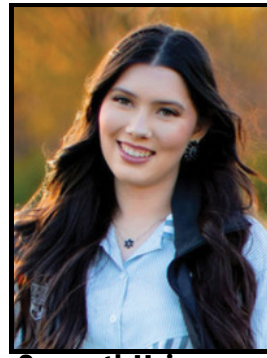
Cameryn Pollmann

Herman E. and Cecilia E. Wiedle
Scholarship – \$2,000



Blake Twenhafel

Herman E. and Cecilia E. Wiedle
Scholarship – \$2,000



Samantha Heinzmann

Allen and Ellen M. Blessman
Scholarship – \$1,000



Grace Henrichs

Prairie Farms Dairy – Leaders of
Tomorrow – \$2,000

IAA

Continued from page 1

at Southern Illinois University – Edwardsville pursuing pharmacy.

- Blake Twenhafel, son of Michael and Angela Twenhafel of New Baden. Blake will be a senior at University of Illinois at Urbana-Champaign majoring in crop science.

**Allen and Ellen M. Blessman
Scholarship – \$1,000**

- Samantha Heinzmann, daughter of Aaron and Jenn

Heinzmann of Carlyle. Samantha will be a sophomore at Kaskaskia College studying agricultural education.

**Prairie Farms Dairy – Leaders of
Tomorrow Scholarship - \$2,000**

- Grace Henrichs, daughter of Bryan and Emily Henrichs of Breese. Grace will be a freshman at either Purdue University or Missouri State University pursuing agricultural business and

history. A full list of scholarship recipients is available at www.iaafoundation.org.

Each year, the Illinois Farm Bureau and county Farm Bureaus collectively award more than \$1 million in scholarships to support students pursuing careers in agriculture.

“The scholarship program acknowledges hard-working students and provides financial support as they pursue their

dreams and careers in agriculture,” said Smith. “Through generous contributions from farm families, Illinois Farm Bureau members, and supporters of agriculture, we continue to see growth and diversification in the program.”

For more information about the IAA Foundation scholarship program, please visit their website at: www.iaafoundation.org.

Safety

Continued from page 1

potentially make a difference in an emergency situation. To date, the Clinton CFB Young

Leaders have awarded \$17,400 in grant funding through their FPD/EMS Grant Program.

Equipment Grants Awarded

A total of \$2,950 was awarded to five county fire departments, in cooperation with a \$800 “Farm Safety Grant” from the Illinois Farm Bureau & COUNTRY Financial

- Clin-Clair Fire Protection Dist. – \$500**
- Hoffman Fire Protection Dist. – \$500**
- Huey-Ferrin-Boulder Fire Dept. – \$800**
- St. Rose Fire Dept. – \$650**
- Sugar Creek Fire Protection Dist. – \$500**

CONNECTING agriculture and education in the classroom

Clinton County Farm Bureau

2026 Summer Ag Tours

JUNE 9 & 10

AG TOURS PLANNED

- Crooked Creek Winery Tour
- Centralia House Restaurant Presentation
- Hippology/Equine/Horse Visit and information
- Tour & Presentation with Plant Land
- Bee Presentation with Al Guttersohn of Breese
- Main Street Pastures

Commodity presentations from beef, corn, dairy & Pork

Illinois Ag in the Classroom staff will provide hands-on lessons along with learning and grant opportunities

\$65 for 16 PDCH's
Must be in attendance both days
lunch provided one day
travel not included
Only accepting 12 teachers

TO RESERVE YOUR SPOT PLEASE COMPLETE THE ONLINE REGISTRATION FORM BY SCANNING THE QR CODE

Scan for online registration



Since 1925 ...

Our Farm Certified Representatives bring 100 years of experience to the table. Find a Rep today.

COUNTRYFinancial.com/Farm

Farm policies issued by COUNTRY Mutual Insurance Company®, Bloomington, IL. 1124-057CP



IAA Credit Union has proudly provided financial services to the Illinois Farm Bureau since 1951.

www.iaacu.org/join

808 IAA Drive, Bloomington, IL 61701



Women in Farming: New to the Narrative, Not the Work

Grandma never questioned butchering two chickens for lunch before church. She cleaned, cut, breaded and partially fried the ultra-fresh poultry, which finished baking in the oven while the family of six attended worship.

Holy chicken. It's almost Mother's Day. I love Sunday dinner out. And the Food and Agriculture Organization of the United Nations for the first time ever named 2026 the International Year of the Woman Farmer. In reality, female farmers aren't a new phenomenon. The industry is just finally talking about it out loud.

On both sides, my family tree is rooted in farming, and I'm blessed that both my grandmas – a fresh 88 and almost 89 – still can coherently share about their careers on the farm. Today, my mom farms, I farm, and more exciting yet, the fourth generation (the oldest now 20 studying agriculture in college) has grown to know two generations of grandmas and their quiet impact on agriculture as partners with the men in their family businesses.

The narrative used to frame a women's farm labor as "just helping." Yet, their husbands will attest these ladies would disk fields, sort and load hogs, locate field tiles, unload racks of hay, fetch parts, market crops, manage the farm financials, sign into debt, pay

the taxes and elevate ear corn into the wire crib. They managed massive gardens that fed the family on summer evenings and year-round through preservation.

Meanwhile, they raised farm kids inspired to enter the same business. With children in tow for farm duties, my mom and grandmas packed lunches for the entire family, feeding hearts and minds with life lessons as much as bellies with nutrition during a hard day's work.

I don't see us returning to the era of buying 100 straight-run chicks, butchering half for meat and raising half for selling eggs. But our farm's ownership by gender is a 50/50 split – Mom, Dad, my 40-something brother and I – all working full-time, pulling the occasional 90-hour weeks and collectively operating, managing, decision-making, succession planning, turning wrenches and respecting the talents each brings to the table, both in the conference room and at family dinners.

The team mindset and collaborative approach support farm continuity, community, harmony and the motive to live values, not just list them. Communally, we create a culture that has the next generation – both males and females – welcome and wanting to belong. That kind of narrative endures.

About the author: Joanie Stiers farms with her family in West Central Illinois, where they raise corn, soybeans, hay, beef cattle, backyard chickens and farm kids.

Follow us on social **KEEP IN TOUCH AND...**
FACEBOOK FIND US ON FACEBOOK® Our Website www.clintoncofb.org

Congratulations to the 2026-2027 Section 22 FFA Officer Team



Leading the team is President Rylee Klingeman of Marissa, alongside Vice President Loughlyn Kurtz of Sparta, Reporter Hannah Kilian of Mascoutah, Secretary Addison Hilmes of Mater Dei, Treasurer Kenzie Crump of Waterloo, Sentinel Addison Tebbe of Breese Central, and Historian Trinity Drewes of Waterloo. We are especially proud to have strong representation from Clinton County, with two local students serving on the team—Breese Central's Addison Tebbe and Breese Mater Dei's Addison Hilmes. Your leadership and dedication to agricultural education continue to make our community proud!



Jeff and Lisa Broom turned their succession challenge into a new opportunity.

With no one in their family interested in taking over the Macoupin County orchard, the Brooms found a path forward with new owner, Marcus Rutherford. In this episode, host Rita Frazer shares the transition story of two unrelated families that are working to keep a farm alive — and the memories tied to it — through partnership, community and a shared commitment to the future.

Episode 40
Turning a new leaf
at Broom Orchard

Scan to listen



Listen: [FarmWeekNow.com/podcasts](https://www.farmweeknow.com/podcasts)
(or wherever you listen to podcast)



Breese Central 2026-27 FFA Officer Team

Pictured from left: President Chase Varel; Vice President Addison Tebbe; Reporter Conner Carrillon; Secretary Maecie Carrillon; Treasurer Blake Wolter; Sentinel Alex Voss; and Directors Bria Tebbe and Hannah Lowe.



Breese Mater Dei 2026-27 FFA Officer Team

Pictured from left: President Angeleen Wesselmann; Vice-President Addison Hilmes; Reporter Emma Meyer; Secretary Lyla Koch; Treasure Caitlyn Vonder Haar; Sentinel Michael Lautenschlaeger; Chaplain Briar Bickl; and Historian Luke Pollmann.

You're Invited to the GEAPS Cornbelt Chapter Maintenance Day

Professionals across the grain industry are invited to attend an upcoming educational and networking event hosted by the Grain Elevator and Processing Society (GEAPS) Cornbelt Chapter in partnership with Arncos Safety. This hands-on, informative Maintenance Day will take place on May 19, 2026, at the Arncos Safety Training Center in Trenton, Illinois.

Designed to address the real-world challenges faced by grain handling operations, this event will focus on critical

maintenance practices that improve efficiency, extend equipment life, and enhance workplace safety. Whether you're a facility manager, operator, maintenance technician, or industry supplier, this session offers valuable insights you can immediately apply.

What to Expect

Attendees will hear from experienced industry professionals during four focused sessions:

- Session 1: Gearing and Bearing Best Practices

- Learn how proper maintenance and monitoring can prevent costly downtime and extend equipment performance.
- Session 2: Buckets and Belts for Bucket Elevators
- Gain a practical overview of components, selection considerations, and maintenance tips for one of the most essential systems in grain handling.
- Session 3: Drag Conveyor Chain Maintenance
- Explore effective strategies

- for maintaining conveyor chains to ensure reliability and minimize wear.
- Session 4: Electrical Safety
- Review key safety practices that protect employees and facilities from electrical hazards.

Event Details

- Date: May 19, 2026
- Time: 10:00 AM – 3:00 PM
- Location: Arncos Safety Training Center, 2955 Trico Dr., Trenton, IL
- Cost: Free (includes lunch)

Why Attend?

This lunch-and-learn event provides a valuable opportunity to:

- Stay current on industry best practices
- Improve operational efficiency and safety
- Network with peers and industry experts
- Ask questions and share experiences in a collaborative setting

Registration Information

While the event is free to attend, registration is required. Participants can log in through their GEAPS membership or create a free account to reserve their spot.

RSVP by scanning the QR Code in the ad on this page.

Don't miss this opportunity to invest in your operation's success and safety. Join us for a day of learning, connection, and practical takeaways that make a difference in the field.



YOU'RE INVITED!

GEAPS CORNBELT CHAPTER MEETING



JOIN US FOR MAINTENANCE DAY

We're hosting the upcoming GEAPS Cornbelt Chapter meeting focused on maintenance best practices that are essential for the grain industry.

Date: May 19, 2026

Location: Arncos Safety
2955 Trico Dr., Trenton, IL

Time: 10:00 AM - 3:00 PM

Price: Free, includes lunch

AGENDA

Session 1: Gearing and Bearing Best Practices
Brad Jackson, Sr. Territory Mgr, Dodge

Session 2: Buckets/Belts for Bucket Elevators
Carl Swisher, Sales Manager Material Handling Division 4B Components Ltd.

Session 3: Drag Conveyor Chain Maintenance
Rusty Shannon, AGI Commercial Sales Mgr

Session 4: Electrical Safety



RSVP

This event is free to attend, but registration is required. **Log in if you're a GEAPS member or create a free account.**

Scan the code below to RSVP!








CONTACT US

(800) 245-7505
sales@arncosafety.com
arncosafety.com

WAYS.....

FARM BUREAU WORKS FOR YOU

-  More than four million dollars saved through member benefit programs for farm, family and home.
-  Advocating for legislation on state and federal levels that works for farmers.
-  Educating youth about the vital role agriculture plays in Illinois.
-  Keeping you informed through RFD Radio Network, FarmWeek, websites, smart phone apps, and more!
-  Providing a place for farmers and their families to collaborate, share ideas, and learn together.

CLASSROOM GRANT PROJECTS



Carlyle Third Grade

Third-grade students recently attended a field trip to Rolling Lawns Farm and The Milk House, where they experienced the daily operations of a working dairy farm. During their visit, they observed the entire milking process from start to finish, gaining a better understanding of how milk is collected and handled. At The Milk House, students participated in hands-on activities, including making their own butter, sampling a variety of flavored milks, and enjoying ice cream of their choice. They also learned how milk is processed into many of the dairy products they use every day.



JOIN US FOR A



REGISTER TODAY




Christmas

in July

NUTCRACKER

Paint Party

Wednesday, July 7

6 - 9 P.M.

Enjoy a relaxing evening with friends while supporting agricultural education in our local classrooms. Every brushstroke helps bring hands-on learning experiences to students across Clinton County.

Tickets include: charcuterie treats holiday nutcracker all paint supplies Bring your favorite drinks



\$40 for members
\$50 non-members



CLASSROOM GRANT PROJECTS



Carlyle First Grade

In September, first-grade classes adopted a calf through the STL Dairy Council. Throughout the year, Doll's Dairy Farm provided monthly updates on the students' adopted calf. These updates included photos, information about the calf's diet, weight, and growth, along with additional educational resources for teachers to incorporate into the classroom.

On April 30, the first-grade students and teachers visited Doll's Dairy Farm to meet their adopted calf in person. During the visit, Farmer Doll guided the students on a tour of the farm, which included a hayride, opportunities to interact with farm animals, and a demonstration of the milking process. The experience concluded with students enjoying ice cream from Prairie Farms, making it both an educational and memorable field trip.



New Baden Third Grade

In February, students planted black petunia seeds and began learning about the early stages of plant growth. In March, they planted marigold seeds using seed pod starters. With the help of a grow light provided through a past grant (thank you!), students were able to successfully nurture their seedlings. The plants have now grown strong enough to spend time outdoors on warm, sunny spring days. Soon, students will transplant the flowers into individual pots. At the beginning of April, students also began incubating chick eggs. Each day, they eagerly learn about the developmental stages occurring inside the eggs and look forward with excitement to hatch day.



CLASSROOM GRANT PROJECTS



Carlyle Kindergarten

Carlyle kindergarten students traveled to Marcoot Jersey Creamery for an exciting and educational field trip. While there, students learned about life on a working dairy farm. They observed how cows are milked, had the opportunity to pet calves, and discovered the process of how cheese is made. One of the highlights of the trip was sampling delicious ice cream made right on the farm from fresh milk. After returning to school, students will reflect on their experience by writing about what they learned during their field trip.



Carlyle Special Ed Early Childhood

The farming project, supported by materials purchased through the grant, provided students with meaningful, hands-on learning experiences centered on agriculture. Throughout the project, students explored the different animals that live on a farm and the various types of foods that are grown there. They engaged with a variety of books about farm life and had opportunities to interact with farm animals, helping them better understand animal care and the important roles these animals play on a farm. In addition, students participated in planting and caring for crops, allowing them to observe the plant growth process and the effort required to produce food. These experiences fostered a deeper understanding of farming and helped students develop an appreciation for the vital role farms play in feeding our communities.

CLINTON COUNTY FARM BUREAU

Sponsorship Opportunities Available



SAT. SEPT 19, 2026

CLINTON COUNTY FAIRGROUNDS • CARLYLE, IL

1 P.M. "King of Clinton County" Farm Stock
Southern Illinois Pullers Classes & MITTP Classes

7 P.M. ITPA Tractor Pull Classes

All Day Admission

\$20 - Ages 18+ • \$10 - ages 11-17 • 10 and under FREE

Active Clinton CFB member households get \$5 ticket discounts when purchased in advance from the Farm Bureau office

Free parking

CONCESSIONS AVAILABLE

ITPA PULLING CLASSES:

- 9,500 lb Limited Pro Stock
- 8,500 lb Limited Pro Stock
- Heavy Modified
- 11,000 lb Pro Farm
- Light Modified
- Pro Stock
- 9,500 lb Pro Farm

"King of Clinton County" Farm Stock Southern Illinois Pullers League & MITTP

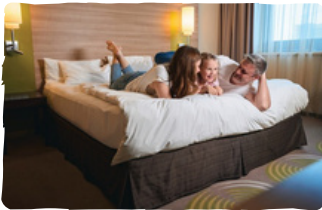
- 7,500 lb Farm Stock
- 10,500 lb Farm Stock
- 12,500 lb Farm Stock
- SIPL 5,500 lb Top Cut
- SIPL 12,500 lb 15 MPH farm stock
- 12,500+ (MITTP)
- 16,000 lb Farm Stock
- Multiple Truck Classes
to be announced closer to event

A fundraiser for Clinton CFB Foundation to support our scholarship programs.





MEMBERS SAVE EVERY DAY



SAVE ON TRIPS
RELAX WITH YOUR SAVINGS
AT **HOTELS**



SAVE ON THE ROAD
EXPLORE YOUR SAVINGS
ON **RENTAL CARS**



SAVE IN THE GARAGE
CRUISE INTO SAVINGS
ON **FORD VEHICLES**



DISCOVER YOUR BENEFITS **TODAY!**

www.myifb.org

NEED ASSISTANCE? CONTACT STEPHANIE AT SKNITTEL@ILFB.ORG

